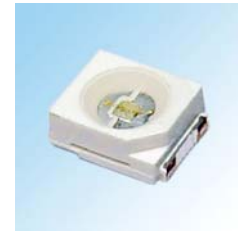




**ATTENTION**  
OBSERVE PRECAUTIONS  
FOR HANDLING  
ELECTROSTATIC  
DISCHARGE  
SENSITIVE  
DEVICES

**HL-AC-3528D17BC-2P**
**BLUE**


### Features

- SINGLE COLOR.
- White package
- Suitable for all SMT assembly and solder process
- Available on tape and reel
- Package:2000pcs/reel

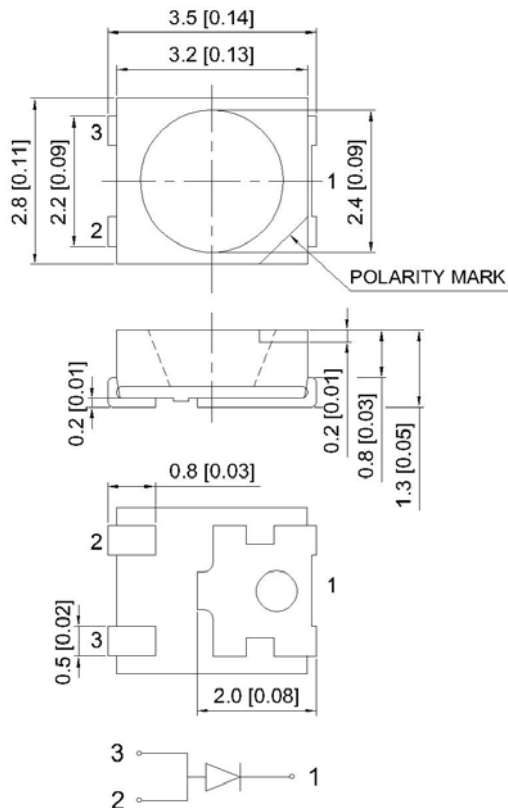
### Description

The Blue source color devices are made with GaN on SiC Light Emitting Diode.

### Applications

- Optical indicator
- Indicator and backlighting in telephone and fax
- Flat backlight for LCD,switch and Symbol
- Light pipe application
- General use

### Package Dimensions



#### Notes:

1. All dimension units are millimeters.
- 2.All dimension tolerance is  $\pm 0.2\text{mm}$  unless otherwise noted.
- 3.An epoxy meniscus may extend about 1.5mm down the leads.

**Selection Guide**

Part No.	Dice	Lens Type	$\Phi_v$ (lm) @ 150mA		Viewing Angle
			Min.	Typ.	2 $\theta$ 1/2
HL-AC-3528D17BC-2P	<b>BLUE (GaN)</b>	WATER CLEAR	—	4.5	120°

Note:

1.  $\theta$ 1/2 is the angle from optical centerline where the luminous intensity is 1/2 the optical centerline value.
2. the above luminous intensity measurement allowance tolerance  $\pm 10\%$ .

**Electrical / Optical Characteristics at  $T_A=25^\circ\text{C}$** 

Symbol	Parameter	Device	Min.	Typ.	Units	Test Conditions
$\lambda_D$	Dominant Wavelength	Blue	455	460	nm	$I_F=150\text{mA}$
C	Capacitance	Blue		110	pF	$V_F=0\text{V}; f=1\text{MHz}$
$V_F$	Forward Voltage	Blue	3.0	3.2	V	$I_F=150\text{mA}$
$I_R$	Reverse Current	Blue		5	$\mu\text{A}$	$V_R=5\text{V}$

**Absolute Maximum Ratings at  $T_A=25^\circ\text{C}$** 

Parameter	Blue	Units
Power dissipation	500	mW
DC Forward Current	150	mA
Peak Forward Current [1]	200	mA
Reverse Voltage	5	V
Operating / Storage Temperature	-40°C To +85°C	

Note:

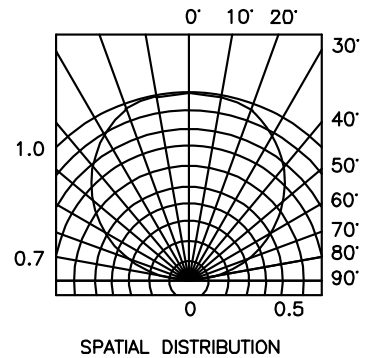
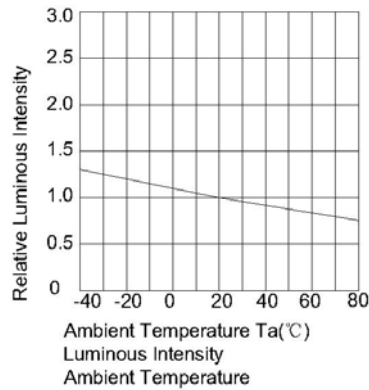
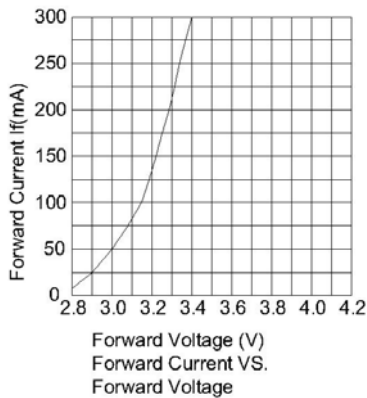
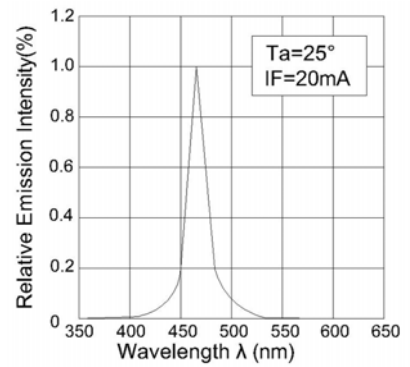
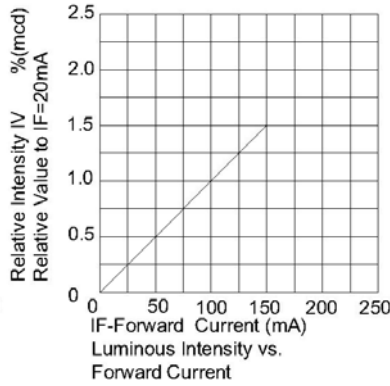
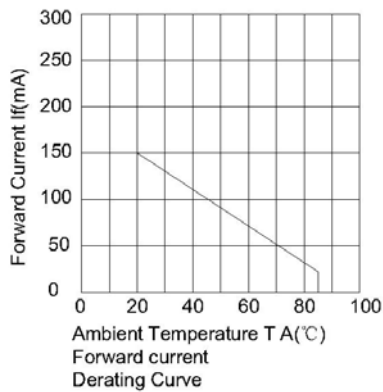
1. 1/10 Duty Cycle, 0.1ms Pulse Width.

**BLUE HL-AC-3528D17BC-2P**
**Reliability Test Items And Conditions**

The reliability of products shall be satisfied with items listed below.  
 Confidence level :90% LTPD :10%

No.	Items	Test Condition	Test Hours/Cycles	Sample Size	Ac/Rc
1	Reflow	Temp:260°Cmax T=5 sec max.	1times.	22Pcs.	0/1
2	Temperature Cycle	100°C±5°C 30 min. ↑↓5 min -40°C±5°C 30 min.	100 Cycles	22Pcs.	0/1
3	Thermal Shock	100°C±5°C 5 min. ↑↓ -40°C±5°C 5 min.	100 Cycles	22Pcs.	0/1
4	High Temperature Storage	Temp.:100°C	1000Hrs.	22Pcs.	0/1
5	Low Temperature Storage	Temp.: -40°C	1000Hrs.	22Pcs.	0/1
6	DC Operating Life	Ta=25°C±5°C IF=150mA	1000Hrs.	22Pcs.	0/1
7	High Temperature/High Humidity	85°C±5°C/ 85%RH IF=50mA	1000Hrs.	22Pcs.	0/1

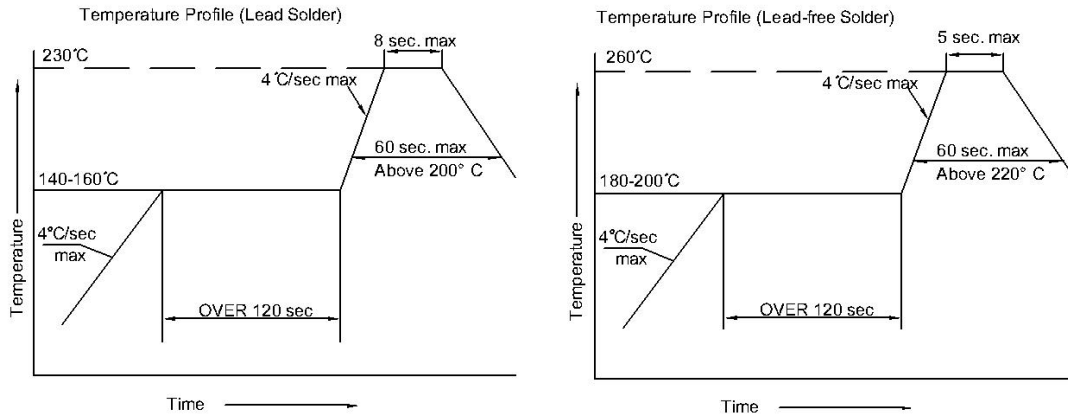
\*The technical information shown in the data sheets are limited to the typical characteristics and circuit examples of the referenced products. It does not constitute the warranting of industrial property nor the granting of any license.



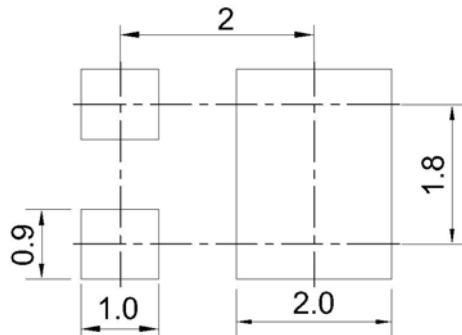
### HL-AC-3528D17BC-2P

#### SMT Reflow Soldering Instructions

Number of reflow process shall be less than 2 times and cooling process to normal temperature is required between first and second soldering process.



#### Recommended Soldering Pattern (Units : mm)



#### Tape Specifications (Units : mm)

