

Part No:

# SDAMB-01201BT00

**Specification:**

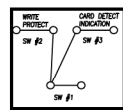
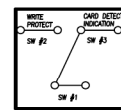
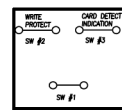
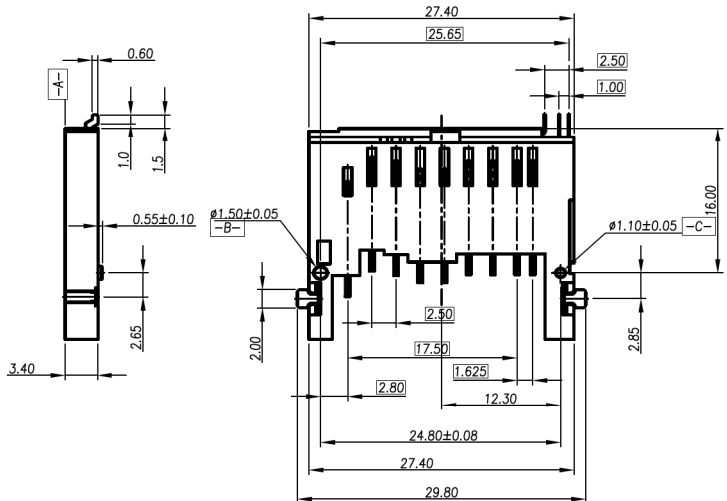
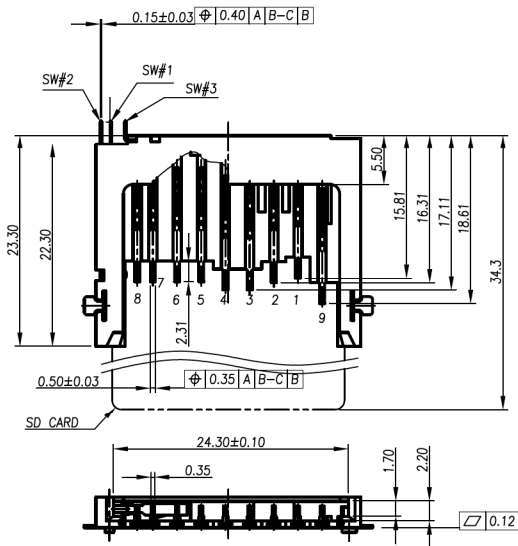
- Withstanding Voltage: 500V AC Max with 1 Minute
- Insulation Resistance: 1000M  $\Omega$  min
- Rated voltage: 250V AC
- Current Rating: 0.5A AC/DC max
- Contact Resistance: 40m $\Omega$  max
- Operating Temperature : -25°C~+85°C
- Insertion Cycles: 10000 Times

**Application:**

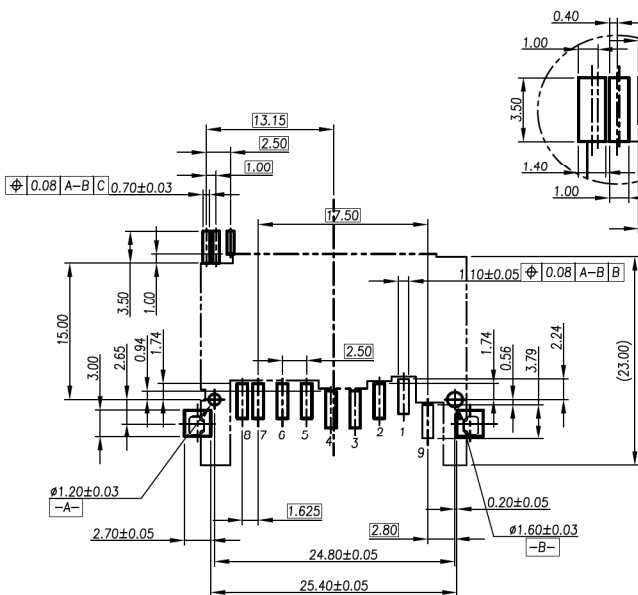
For Secure Digital AND Multi Media Card Use Material

Housing: LCP, Glass Fiber

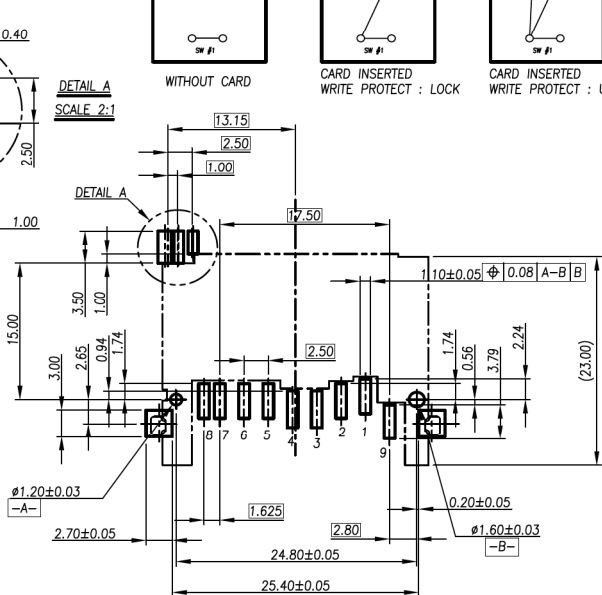
Contact: Copper Alloy



WITHOUT CARD      CARD INSERTED WRITE PROTECT : LOCK      CARD INSERTED WRITE PROTECT : UNLOCK



PC BOARD LAYOUT COMPONENT SIDE



PC BOARD LAYOUT COMPONENT SIDE