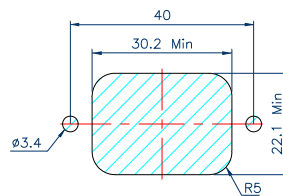
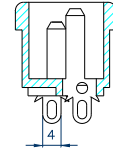
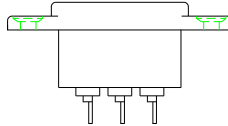
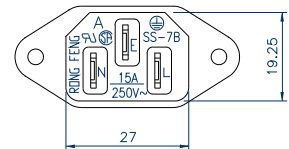
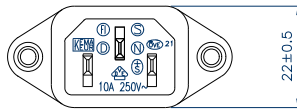


AC SOCKET

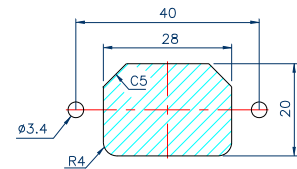


STANNDAAARD: IEC 320 C14
 RATING : 15A 250V AC
 APPROVALS : UL/CSA
 RATING : 10A 250V AC
 APPROVALS : VDE/SEMKO/CCC/KTL/BSMI

| | X | MODE |
|------------|-----|------|
| SS-7B-VDE- | 4.8 | |
| | 4.0 | |



Mounting inlet flange at back of cover.



Mounting inlet flange in front of cover.