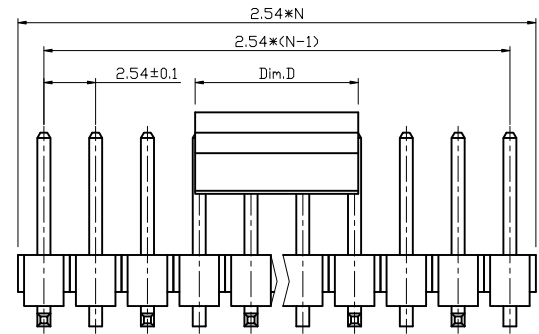
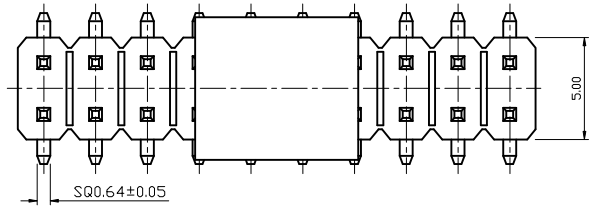
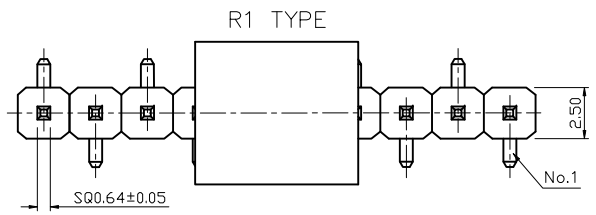
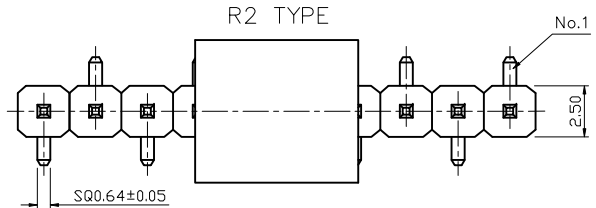
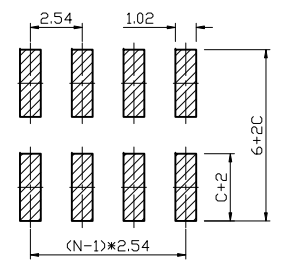
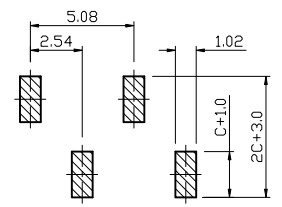
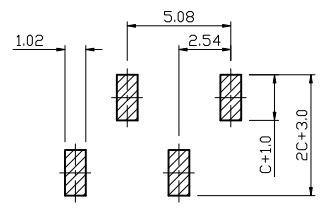


REV.	DESCRIPTION	DRAWN	CHECKED	APPROVED
A	NEW RELEASE	YCH 11/19/10'	~	LJC 11/19/10'
B	ADD P/N CODE	LJC 12/08/13'	~	LJC 12/08/13'
C	PICK UP CHANGE	YCH 04/23/14'	~	LJC 04/23/14'
D	PICK UP CHANGE	JLZ 01/26/16'		



pos.	Dim.	Dim.D
2~3pin		5.0mm
4~40pin		9.0mm



RECOMMEND PCB LAYOUT
TOLERANCE=±0.05

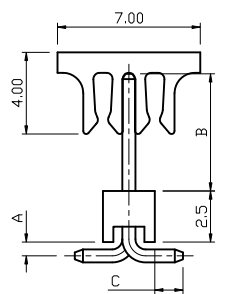
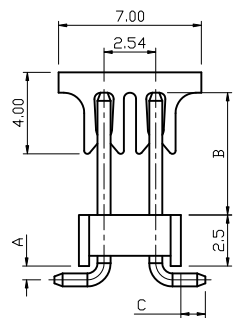
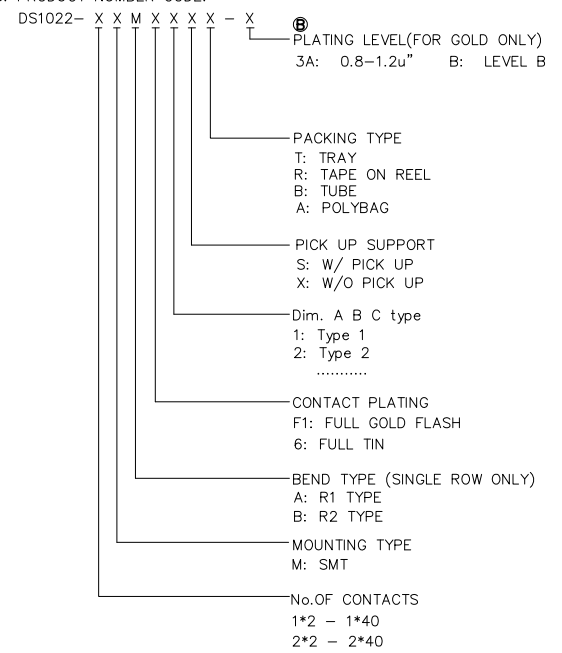


TABLE B:

TYPE	Dimension			Pin Length (mm)
	A	B	C	
1	1.50	6.00	3.00	13.80
2	1.20	6.00	3.00	13.50
3	0.68	7.75	1.20	12.90
4	1.20	8.00	2.50	14.90
5	1.20	6.00	1.20	11.70
6	0.70	6.00	1.40	11.30
7	1.50	6.00	1.20	11.90
8	1.00	5.84	1.40	11.60
9	1.00	8.13	1.40	13.80
10	1.18	11.00	2.50	17.90
11	0.68	4.50	1.40	10.00
	0.48	6.00	1.25	11.00

NOTES:

- MATERIALS
 - CONTACT MATERIAL: COPPER ALLOY.
 - CONTACT PLATING: FULL GOLD OR TIN OVER NICKEL.
 - INSULATOR MATERIALS: HIGH TEMP. UL94 V-0,COLOR OF BLACK.
- SPECIFICATIONS
 - CURRENT RATING: 3A.
 - OPERATING TEMPERATURE: -40°C TO +105°C.
 - INSULATION RESISTANCE: 1000Ω MIN.
 - CONTACT RESISTANCE: 20mΩ MAX.
 - DIELECTRIC WITHSTANDING : 600 VAC.
- PRODUCT NUMBER CODE:



GENERAL TOLERANCE	ANGLE TOLERANCE	PROJECTION	TITLE
X. ±0.60	X. ±5°	UNITS	PIN HEADER PITCH 2.54mm SMT TYPE
.X ±0.38	.X ±3°	SHEET SIZE	SERIES DS1022 SERIES
.XX ±0.25	.XX ±2°		
DRAWING TYPE	CUSTOMER		
SCALE	1:1 SHEET 1 OF 1		
DRAWING NO.	C-DS1022-XMXXXXXX-X-D		

晨翔电子有限公司
CONNFLY® CONNFLY ELECTRONIC CO., LTD